

TECHNICAL DATA

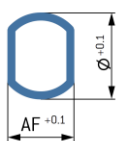
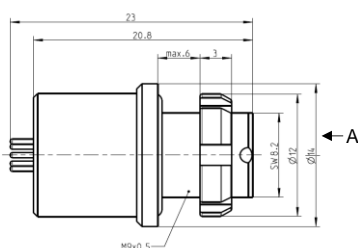
ODU MINI-SNAP[®]

PART NUMBER

G80L0Q-PU5QF00-00V0

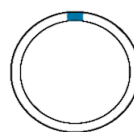
Type of connector	Receptacle for rear panel installation
Orientation	Straight
Number of contacts	5
Contact type	Socket
Termination of contact	Print
Contact diameter	0.7 mm
Termination diameter	0.5 mm
Nominal current (single contact / insert)	4.0 / 3.0 A
Nominal voltage acc. to IEC 60664	7.5 V AC
Mechanical coding	0°

DIMENSIONS

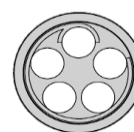


AF: 8.3 mm
Ø: 9.1 mm

Coding: 0°



Positions: 5



(A)

TECHNICAL INFORMATION

ENVIRONMENTAL

Degree of protection	IP 50 in mated condition ¹ IP 68 in unmated condition
He leakage rate	< 1 x 10 ⁻⁸ mbar l/s (tested at < 10 ⁻⁹ mbar l/s) acc. to DIN EN 60512-14-2:2006
Operating temperature range	-20°C to +120°C
Mating cycles	5000
Durability	Autoclavable (500 autoclaving cycles, according to DIN EN 13060:2015)

MATERIAL DESIGNATION

Housing material / surface	Aluminum / chrome-plated
Plating material (contact)	Au
Sealing	FKM
Insulator Material	Glass, PEEK

CHOOSE MATING PLUG

S10L0C-P05MFG0-__00
S20L0C-P05MFG0-__00
W10L0C-P05MFG0-__00²
W20L0C-P05MFG0-__00²
A10L0C-P05MFG0-__00²
A20L0C-P05MFG0-__00²

¹ IP50: With proper ODU MINI-SNAP Push-Pull and Break Away Plugs

² Support of USB[®]2.0 depends on the respective application. For further information please contact zentral@odu.de

Demand of special surface roughness and special pin layout, more information up on request

TECHNICAL DATA

ODU MINI-SNAP®

PART NUMBER:

G80L0Q-PU5QF00-00V0

Number of contacts	Contact type	He leakage rate according to DIN EN 60512-14-2:2006	Insulator material	Data transfer protocol	Data transfer rate	Nominal current (single contact / insert)	Nominal voltage acc. to IEC 60664
0 5	socket	$1 < 10^{-8}$ mbar l/s	glass + PEEK	USB®2.0	480 Mbit/s	4.0 / 3.0 A	7.5 V AC